

# Waimea Community Dam Shareholders update

June update



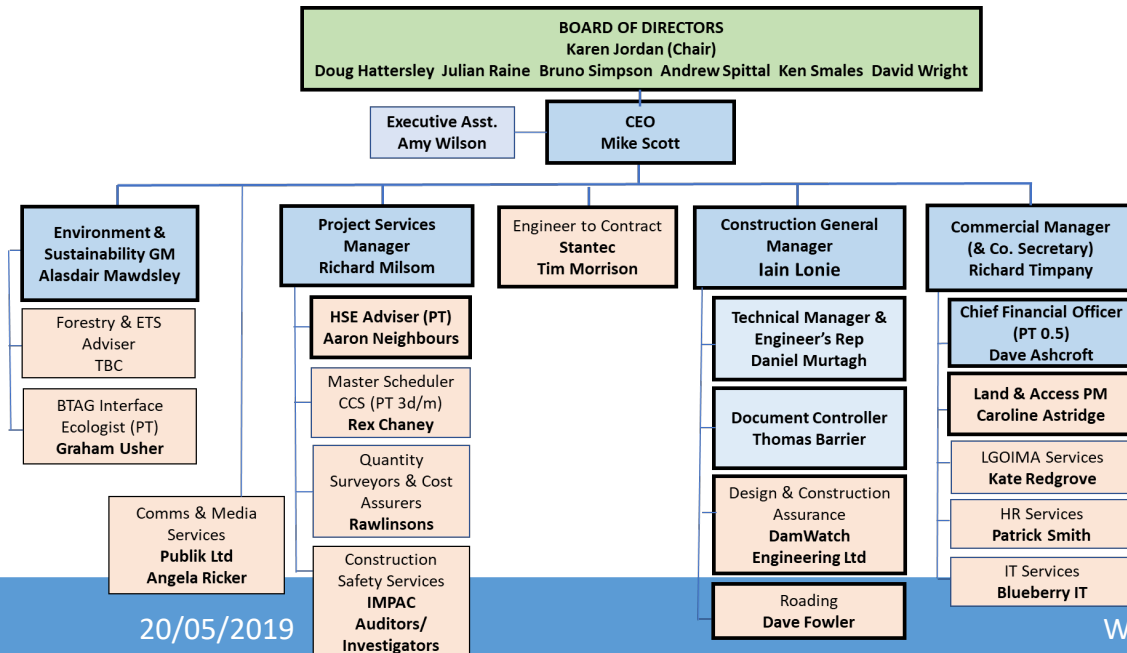
# Waimea Community Dam is underway

- Fully funded TDC, WIL + CIIL
- WWL incorporated 27 Nov 2018
- Financial close 21 Dec 2018
- Construction commenced 14 Jan 2019
- Organisation in place early 2019
- Dawn Blessing March 2019



# WWL Organisation

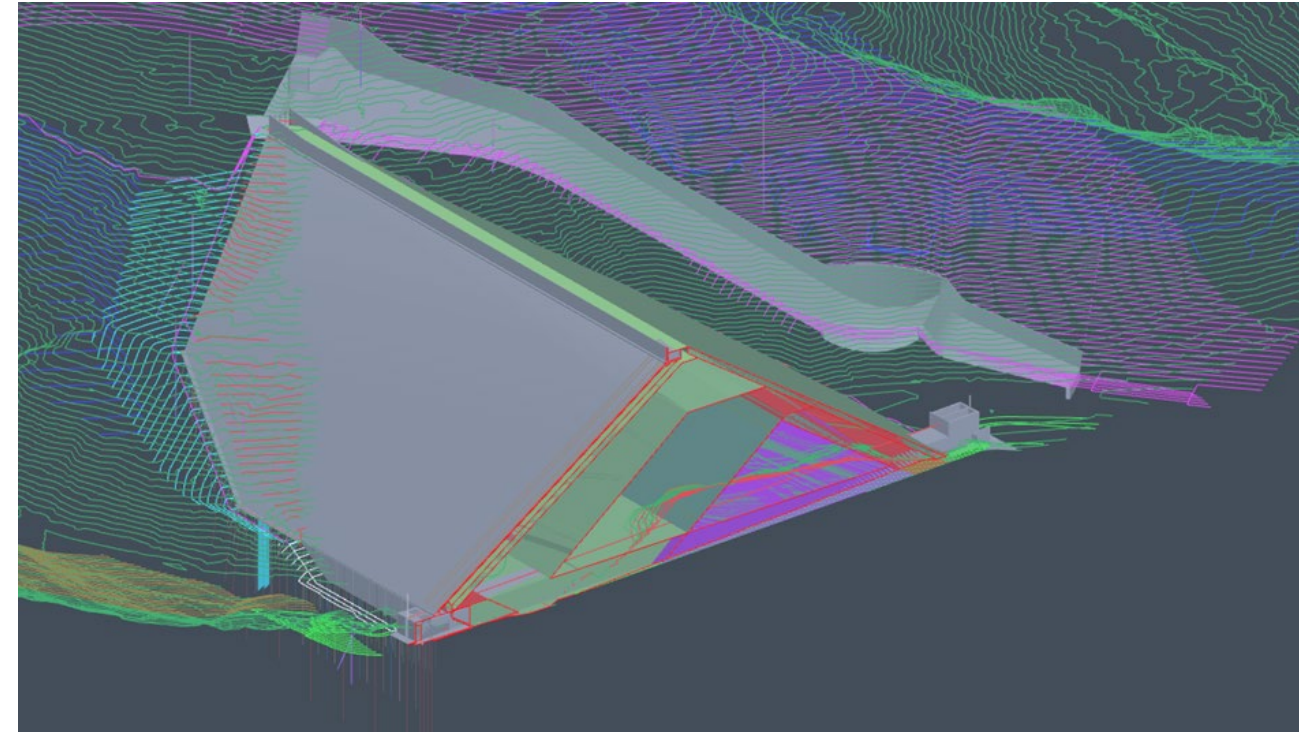
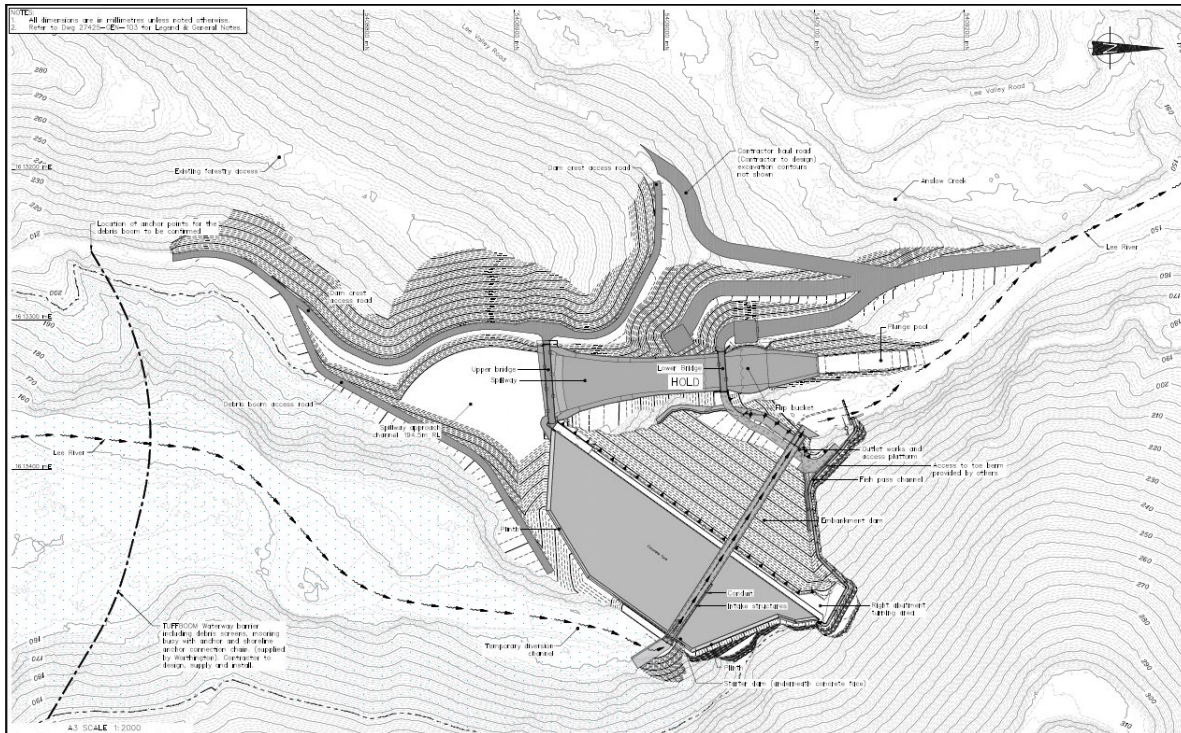
- Strong experienced board meeting regularly
- Experienced and highly skilled specialists
  - Environment & Sustainability
  - Design
  - Construction
  - Project Services
  - Business & Finances





# Design

- Damwatch has been appointed as Designer and Construction-Reviewer
- Currently focusing on opportunities to reduce costs, optimise design and de-risking
- 257 Drawings revised and being reissued for construction





# Construction

Fulton Hogan Taylors Joint Venture is the main contractor building the Dam

- Access Road: 3 km of road out of 6.5 km is complete. Right Hand Abutment access underway
- Preparatory work: Constructed Sediment Retention Ponds, cleared Pig Flat, felling trees
- Site Monitoring: Turbidity water quality monitoring





# Construction: July - August

- Construction of access to right hand side abutment
- River diversion left hand side
- Commence vegetation clearance in reservoir footprint
- Commence clearing and excavating left and right hand sides
- Commence constructing temporary coffer dams
- Compaction / Permeability trials



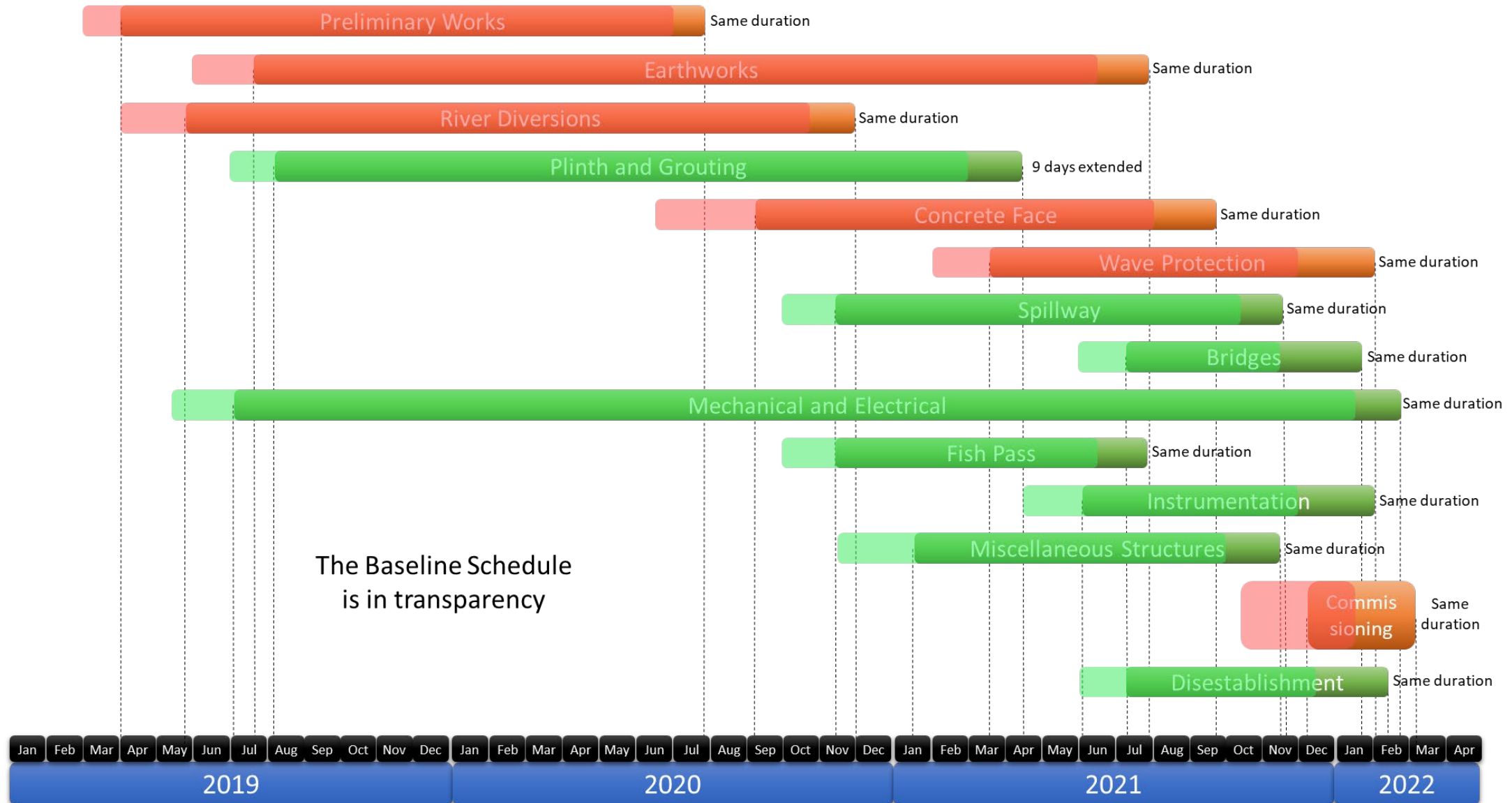


# Environment and Sustainability

- 121 Resource Consent conditions
- Working 98 action items
- Sediment Retention Ponds (Pig Flat)
- Construction Environmental Management Plans approved and being audited
- Biodiversity Management Plan approved with 8 sub-management plans. BTAG support
- 4 rare plant species being moved (BMP #2)
- Planning Rough Island Wetland restoration (BMP #4)
- Planning for Emission Trading Scheme (ETS)
- Preparing Reservoir Management Plan



# Program





# Challenges and Risks

- Geology to be better understood 4Q2019
- Mechanical, electrical and surveillance design finalised 4Q2019
- Flood risk with contractor but risk to schedule. 12 May 1:50 year 47 mm/hr = 250 m<sup>3</sup>/s
- Force Majeure: Drought / Fire risk; Disturbances

## In the News

Waimea Dam to aid eels on journey to Pacific – scientist, 11<sup>th</sup> December 2019, Radio New Zealand

Construction of Waimea dam set to begin, 16<sup>th</sup> January 2019, Nelson Mail

Waimea Water boss pumped to be part of 'legacy' dam project, 9<sup>th</sup> May 2019, Nelson Mail

Waimea Water brings exec home, 9<sup>th</sup> May 2019, Farmers Weekly

Waimea Water pumped and ready for more action, 7<sup>th</sup> June 2019, Waimea Weekly



# SOI: We are doing what we said we would do

## Health & Safety

- ✓ Implement Health and Safety Management System complementing Contractor's system
- ✓ Verify and audit Contractor compliance and track investigations
- ✓ Track key leading and lagging indicators

## Sustainability

- ✓ Comply with Resource Consent conditions and Biodiversity Management Plan
- ✓ Review and audit Construction Environmental Management and Vegetation Clearance Plans
- ✓ Water quality monitoring
- ≈ Implement carbon offset (ETS) plan; and minimise carbon emissions

## Project Delivery

- ✓ Optimise design for safe, reliable and efficient operation
- ✓ Design (PS-1; PS-2) and construction (PS-4) certification
- ≈ Review and optimise schedule for practical completion Oct-2021



# SOI: We are doing what we said we would do

## Funding

- ✓ Provide regular and transparent cost and funding forecasts to completion
- ✓ Meet statutory and agreed financial deadlines with financial accounts. Audited
- ✓ Operate an effective internal control environment

## Engagement

- ≈ Active engagement with our communities and stakeholders
- ✓ Proportionate media and social media presence
- ≈ Engage Mana Whenua

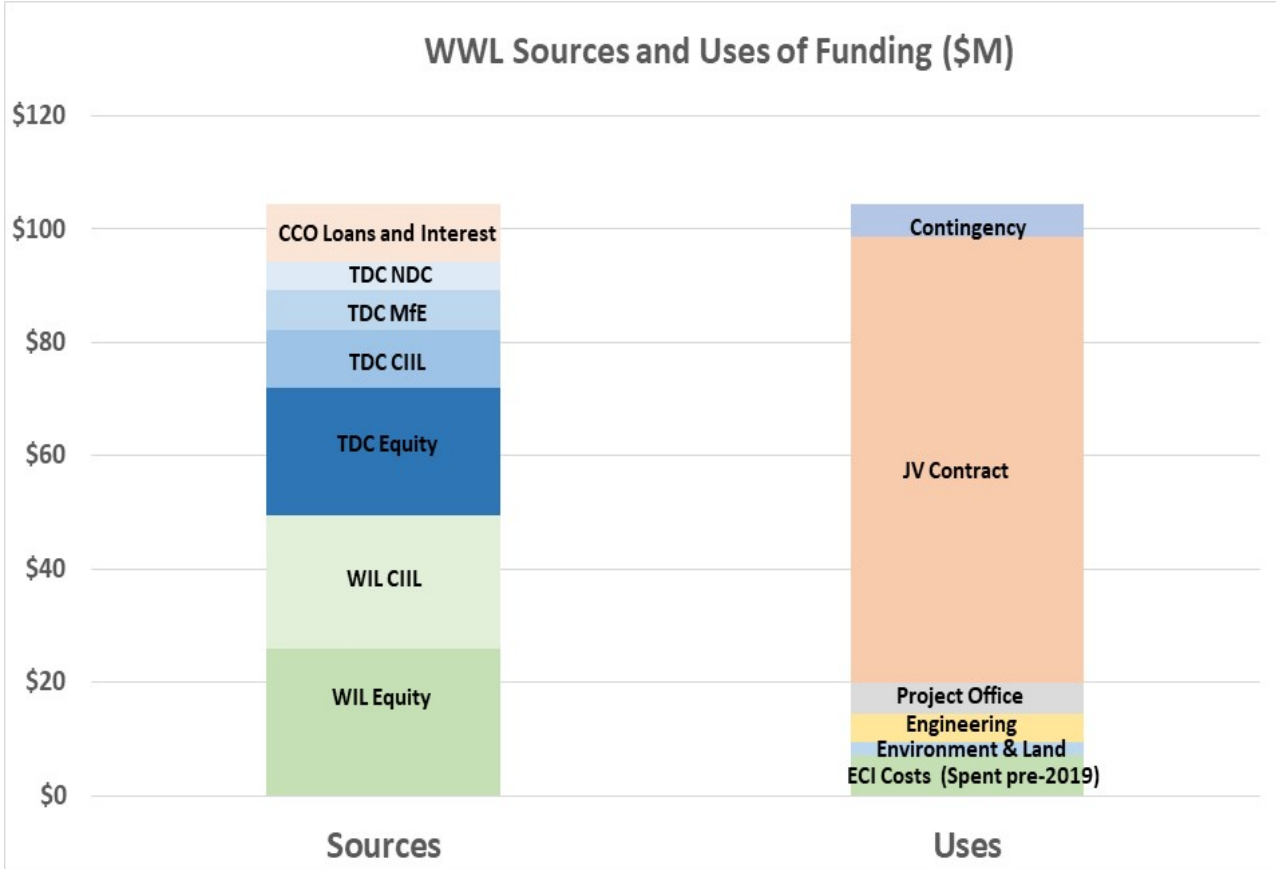
## Risk Manage

- ✓ Implemented small and specialised organisation of experienced professionals
- ✓ Implemented a system to determine and mitigate risks
- ✓ Governing the project to mitigate cost and schedule risk

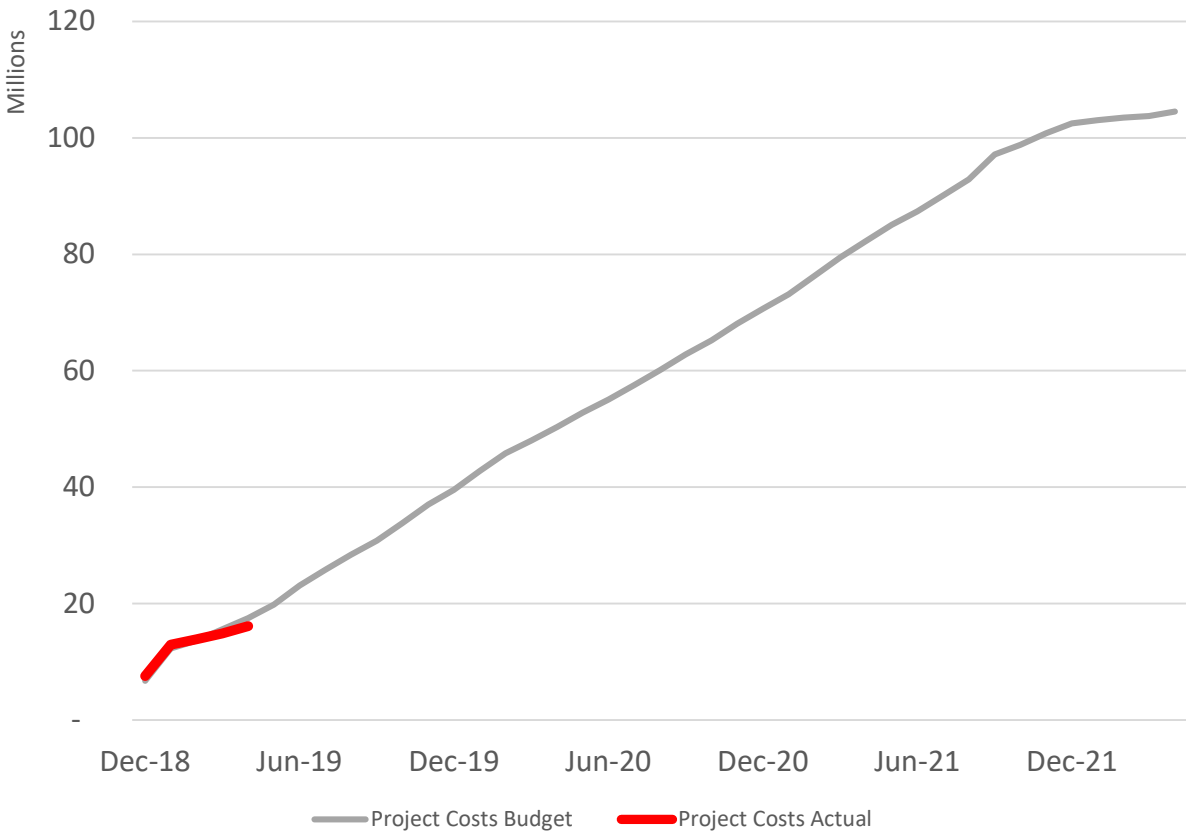


# SOI: We are doing what was said we would do

## Funding and Spend



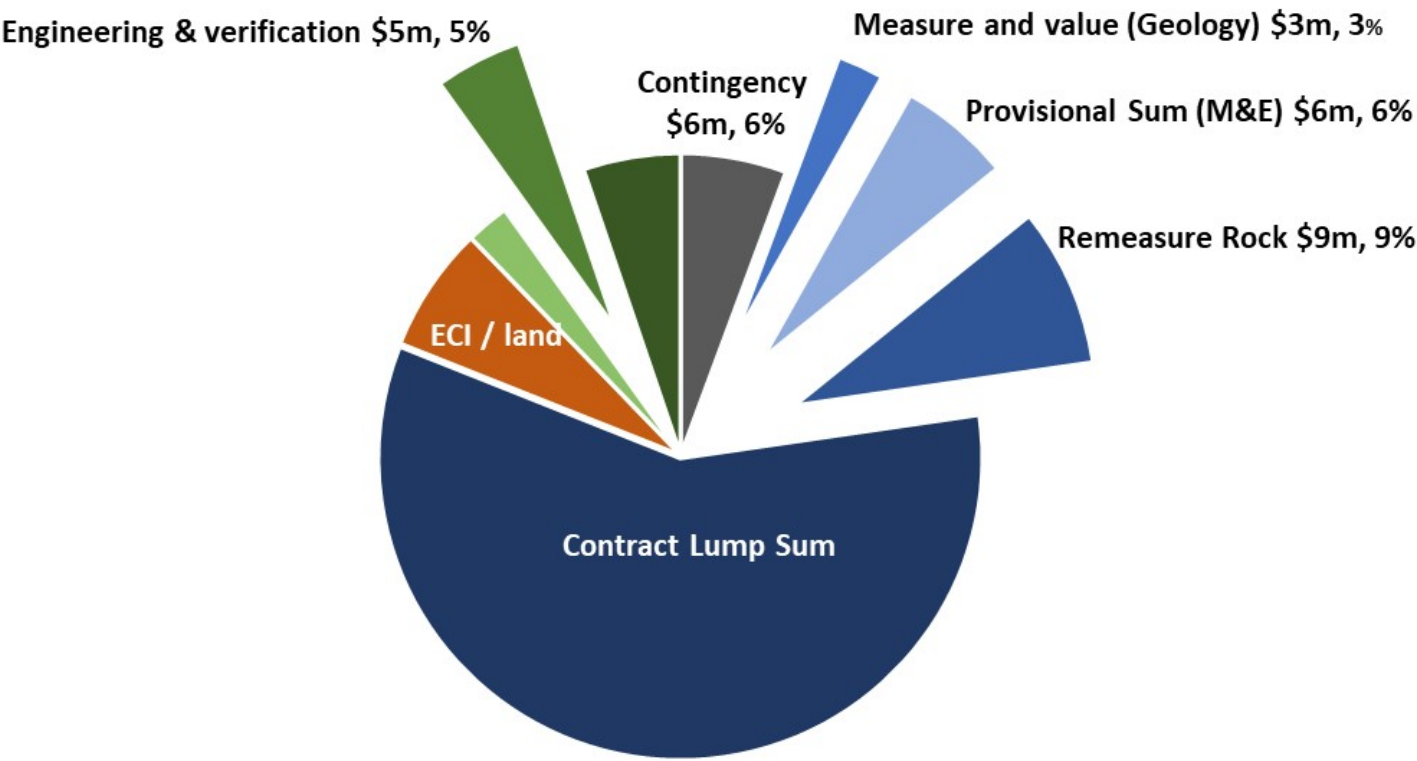
## Forecast cost & schedule to complete





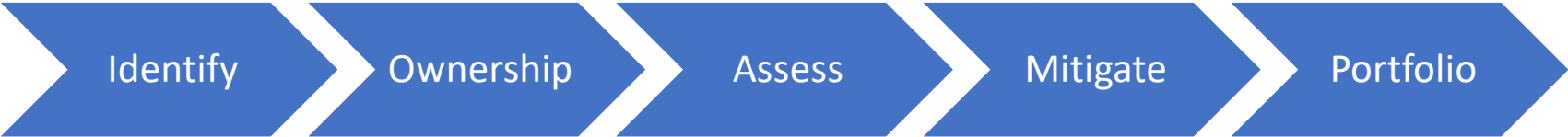
# SOI: We are doing what we said we would do

## Risk Management: 22% of Project Budget at Risk



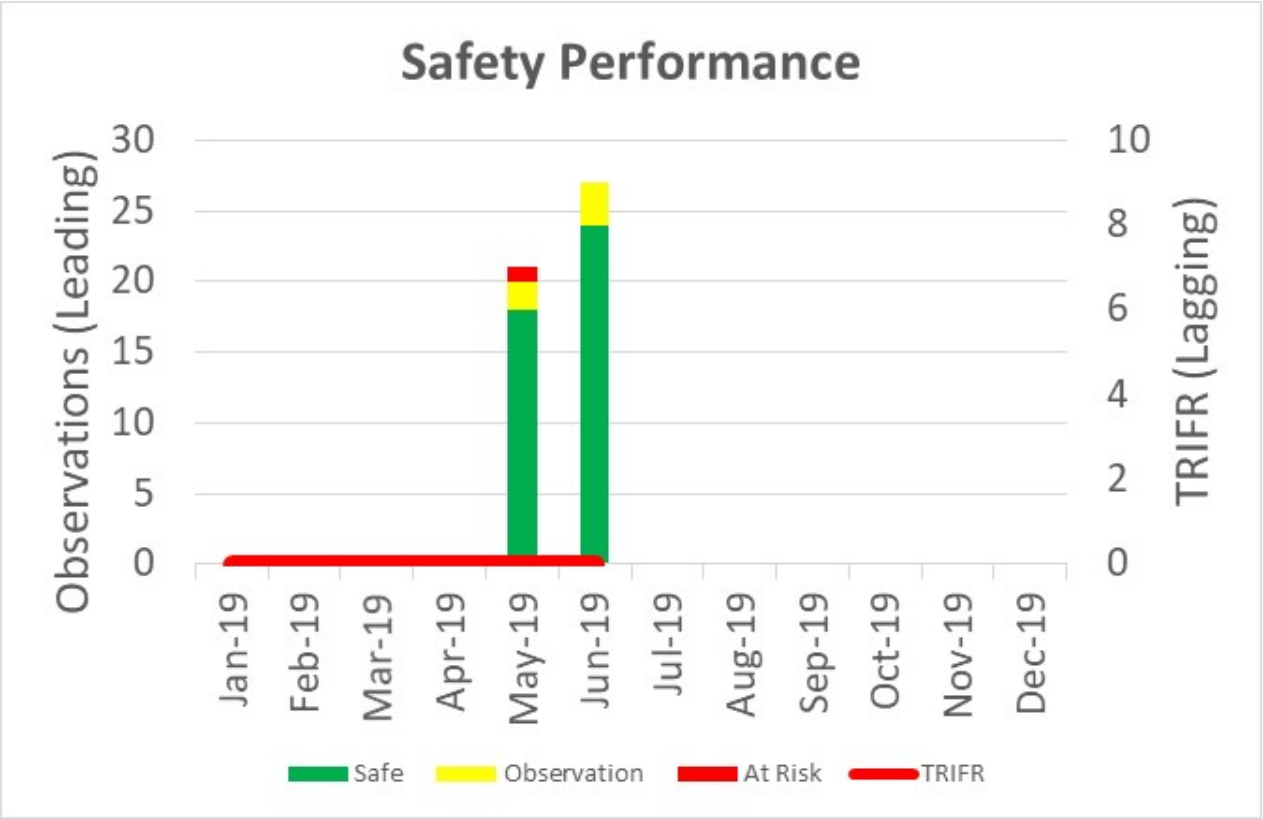
### Risk Register (56)

- Compaction trials
- Further Borelogs
- M&E Design
- Refine Grout Spec
- FM Preparedness

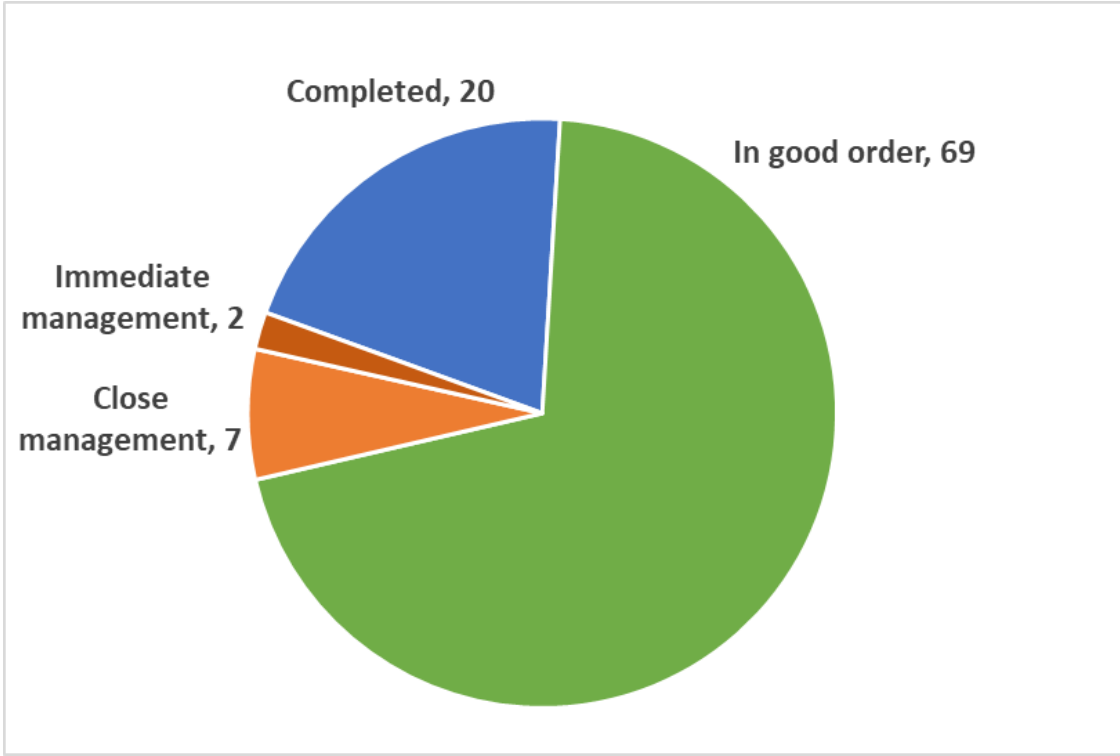


# SOI: We are doing what we said we would do

## Health and Safety



## Compliance and Audit



Late or urgent compliance issues: **0**



# Plan: Quarterly Update to Shareholders

August

1. Project Update
2. Annual report
3. Performance against Statement of Intent previous year

November

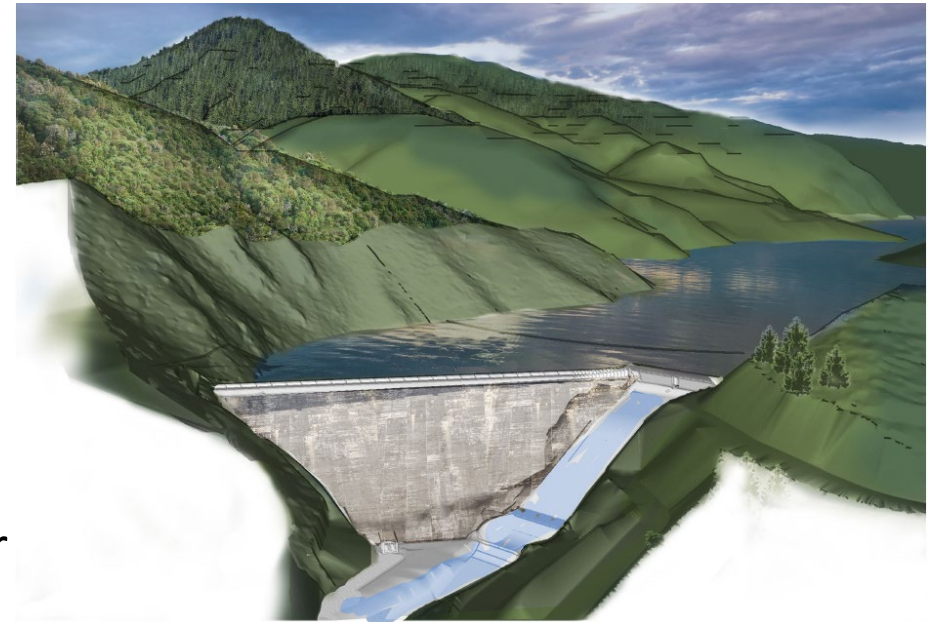
1. Project Update

February

1. Project Update
2. Interim (half yearly) report
3. Proposed Statement of Intent for next year

May

1. Project Update



# Governance

