

Waimea Community Dam TDC Council

10 September 2020

Waimea Water

Agenda

1. Introduction

- Safety: 1st Lower grade injury
- Environment and consent: Full compliance
- Biodiversity Management Plan: Continues

See 2020 Annual Report
(Sept-2020)

2. Construction Update

3. Design Update

4. Funding and expenditure

5. Expenditure and progress

6. Covid-19 impact

7. Programme

8. Questions



Construction Update: Diversion Culvert Complete



River Diversion Culvert: 165m long X 6.8mW_{od} X 5.3mH_{od} : 815 tonnes steel; 8,100 m³ concrete

Construction Update: Diversion Culvert Blessing



Construction Update: River Diverted 2 September 2020



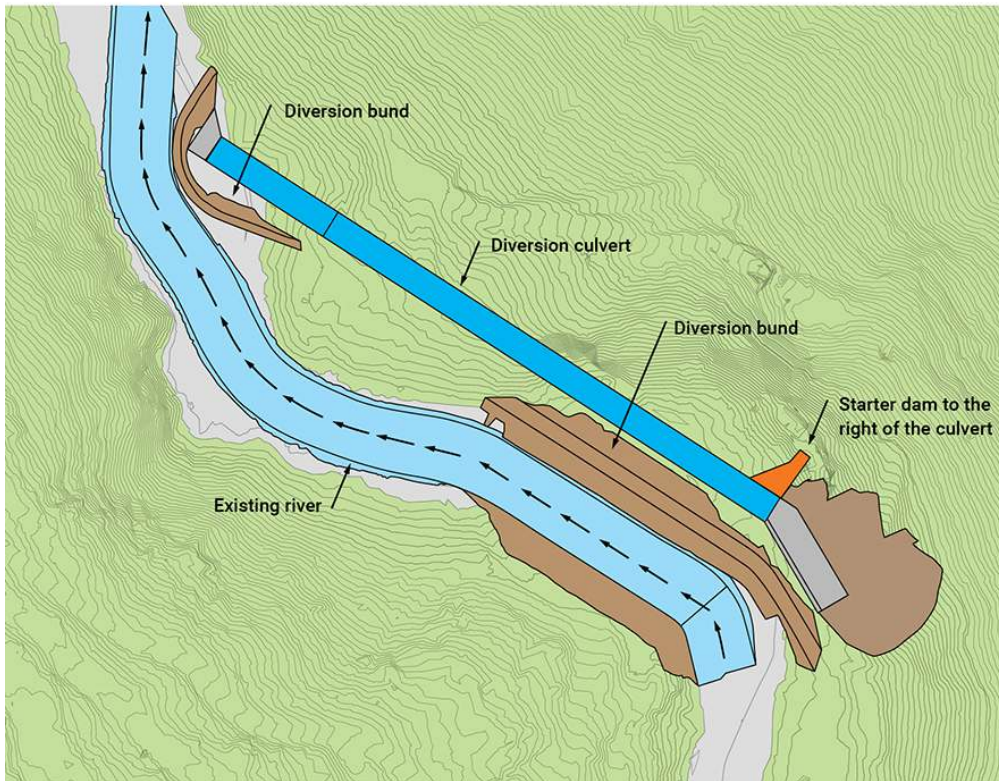
10/09/2020

Waimea Water Ltd

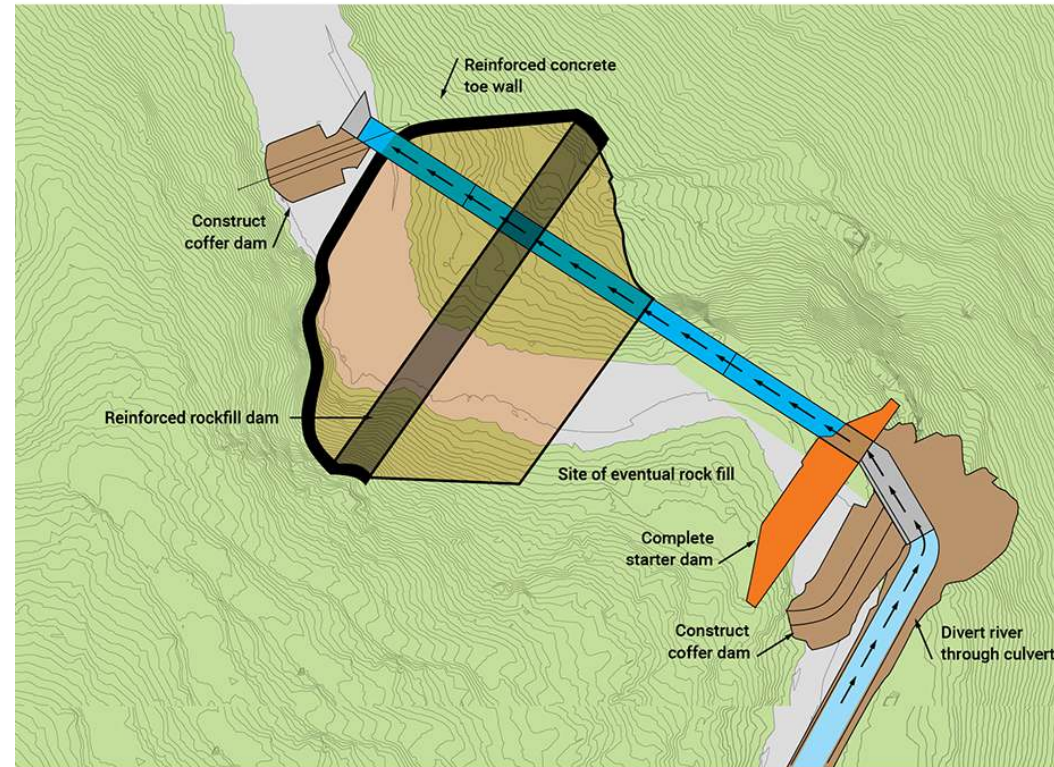
5



Next Steps: Coffers, Starter and Reinforced Dams



Stage 1: Complete



Stage 2: Underway

Construction Update: Cofferd Dam underway



10/09/2020

Construction Update: Spillway and Plinth



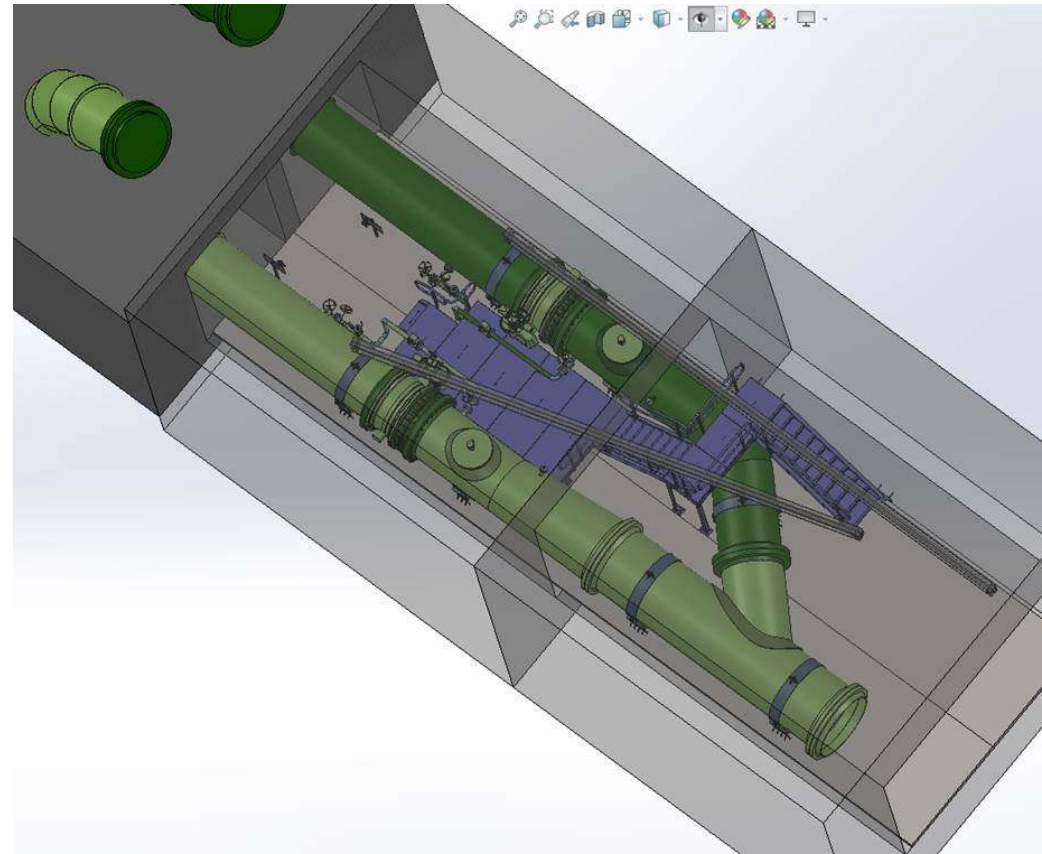
Spillway Foundation



LHS Plinth

Design Update

- ✓ Embankment zoning:
 - Optimise drainage zones and gradings
- ✓ Spillway:
 - Redesigned with vertical walls to mitigate topography / geology risks
 - Increased drainage per recent standard
- ❖ Mechanical and Electrical:
 - ❖ Not designed or priced at contract award / start
 - Mechanical complete and being priced. Risk
- ✓ Power:
 - Investigating inline micro-hydro for power needs
 - Proposed 'hydro-ready' concept to TDC



Cost

Cost and Risks		
	Budget	\$104.4M
1	Encountered Conditions ➤ Import drainage rock and zones, slope stabilisation, voids	\$14.8M
2	Improved dam resilience ➤ spillway, grout	
3	Underbudgeted items ➤ M&E, engineering and office costs	
4	Savings ➤ removal of bridge, fibre optic	
5	Remaining Unallocated Contingency	\$1.3M
Committed Costs		\$118.3M
Probable Costs and Risks (as advised Feb-2020)		\$129.4M

Excludes Cost of COVID-19

Cost Pressure and Threats

- Geology
- Plunge Pool
- Mechanical & Electrical
- COVID-19 Cost & Delays



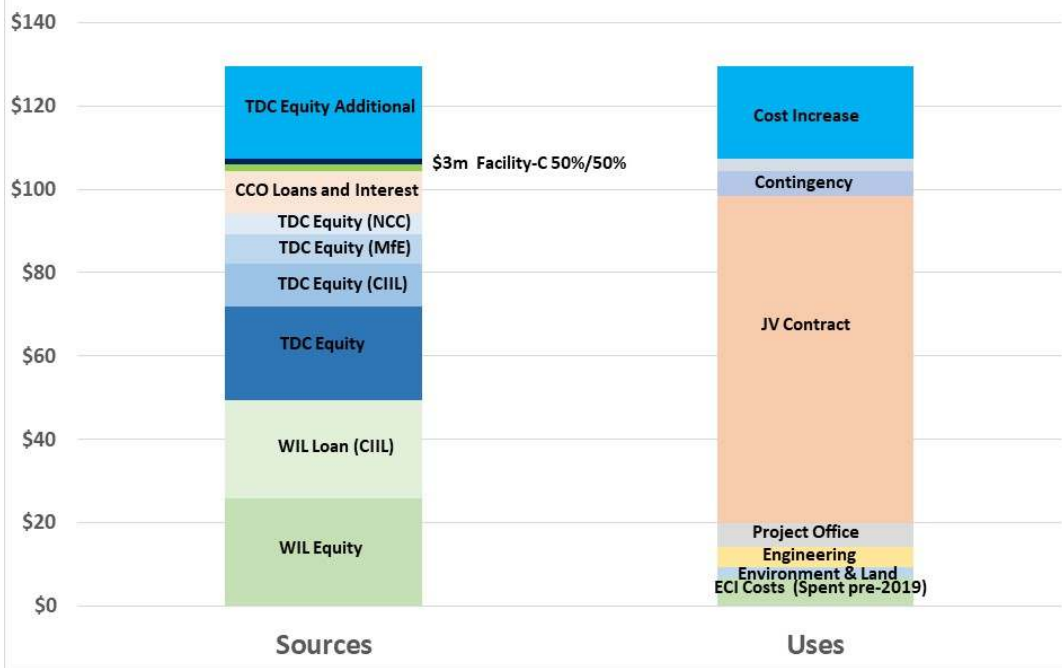
1st Quarter 2021

- Starter Dam Complete
- Embankment ~ 15m
- Grouted LHS/River
- M & E Priced
- COVID-19 Understood

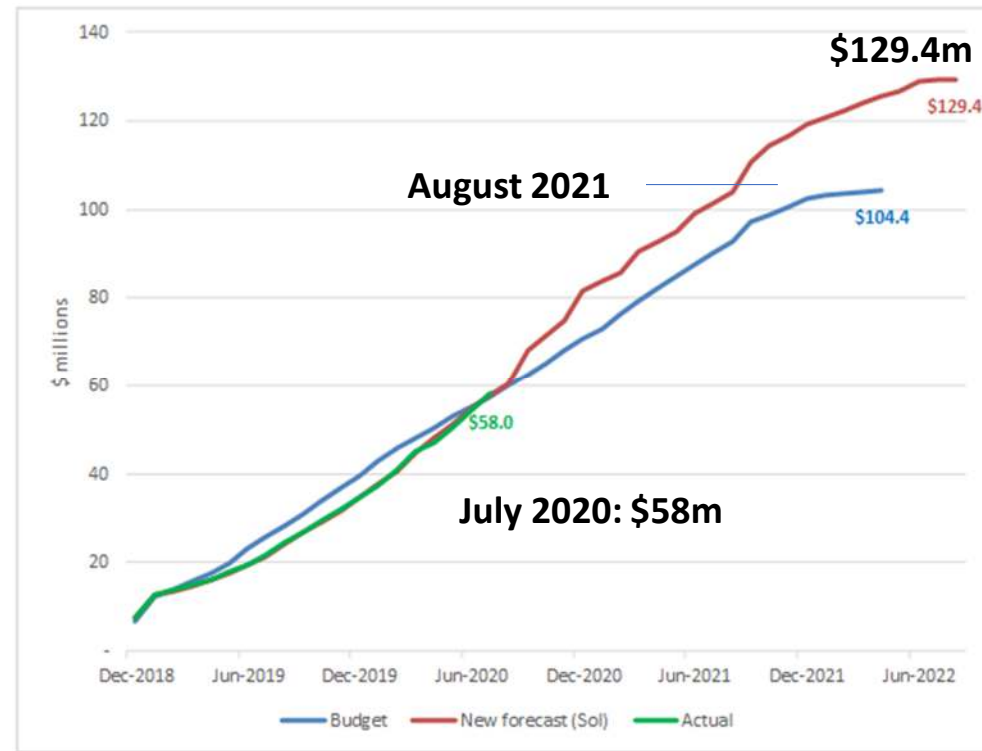
Funding and expenditure: 31 July 2020

Funding and Spend

WWL Sources and Uses of Funding (\$M)

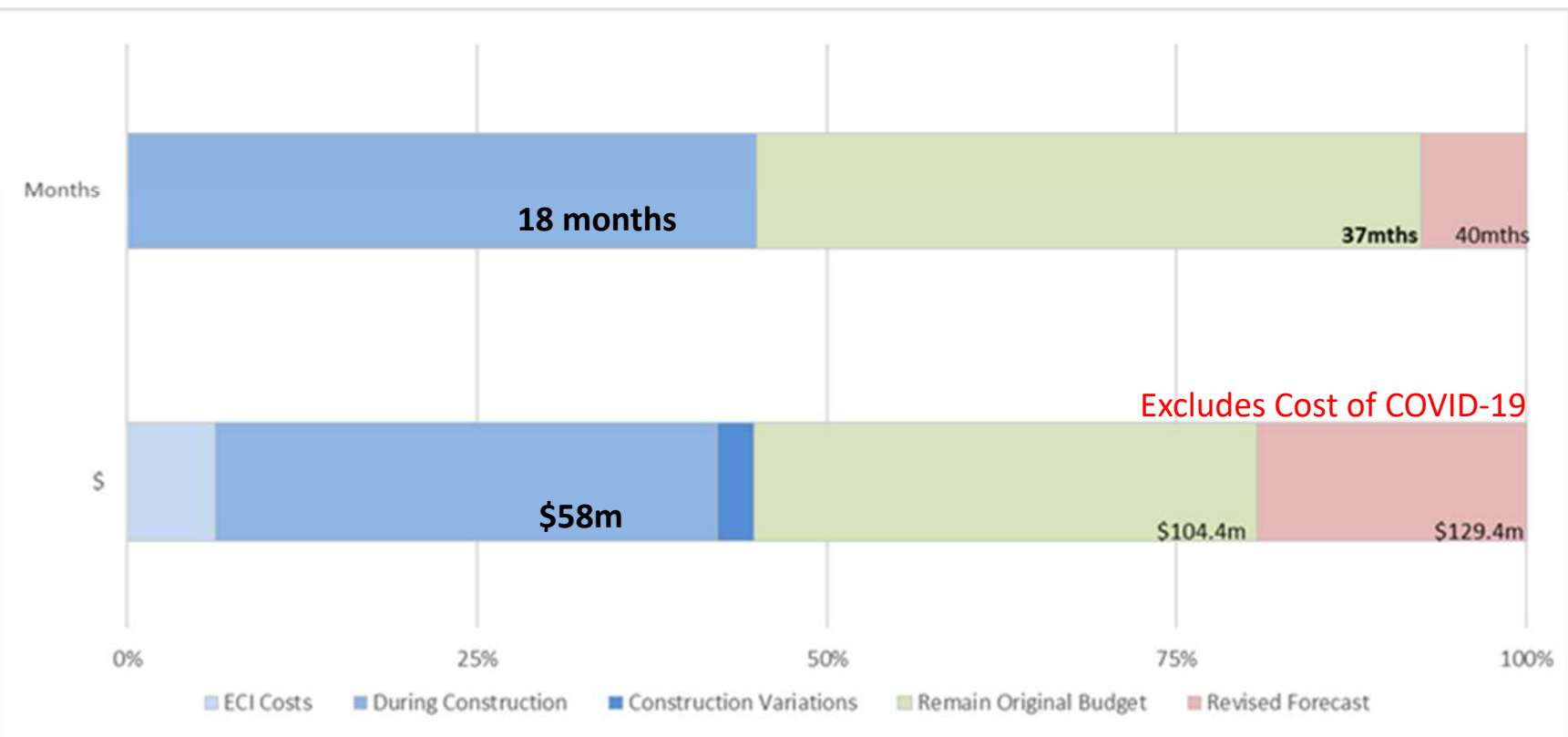


Forecast cost & schedule to complete



Excludes Cost of COVID-19

Expenditure and progress: ~ 45% complete




Progress

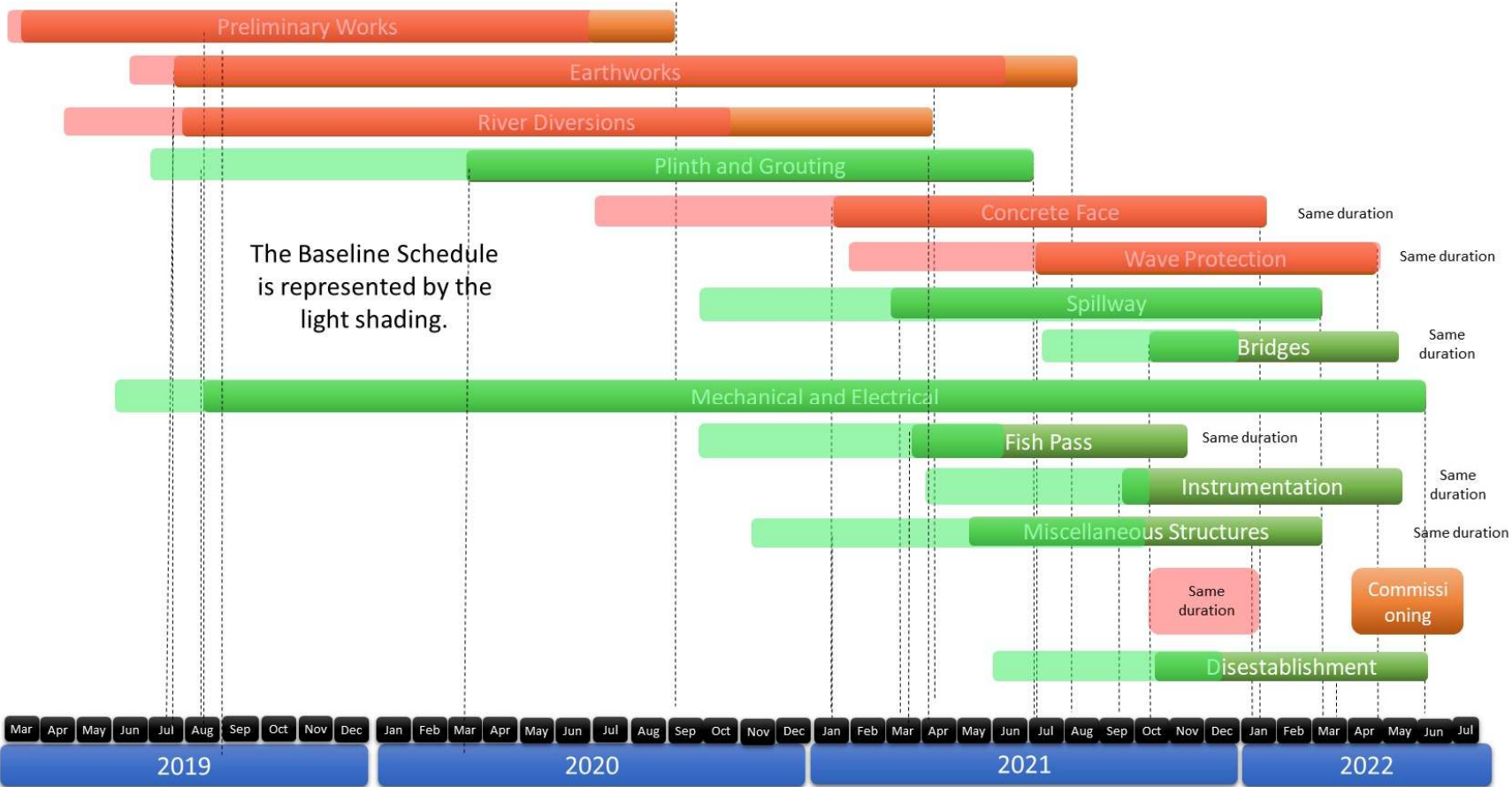
Expenditure

COVID-19

- ❖ WWL incurs cost of 6-week Suspension and Remobilisation / Lvl-3
 - Not covered by insurance
- ❖ Cost of suspension and recovery to yet be determined
 - Looking to NZ Construction Industry. No precedents
- ❖ International supply chain challenged and likely to further slow project
 - ✓ Resilient supply chain for equipment, materials, parts
 - ✗ Bringing foreign technicians into NZ for short periods proving problematic / risk
- Impact of COVID-19 to be determined during 2020/21 year per Final SOI
 - Direct costs: Suspension, remobilization, level-3, quarantine and procurement impacts
 - Indirect cost: Project Delay to avoid filling reservoir over 2021/2022 summer season
 - ❖ Schedule: 6+ months to avoid 2021/2022 season. Commission by ~Oct 2022

Programme: + 6 months = +1 season

- ❖ Currently expect 6 month delay  Fill reservoir after 2021/2022 season
- ❖ Further slippage risk: Immigration-NZ and geology



More Information



Recent events



Check out the key facts about the dam



Read more news about the dam



Construction update



Latest reports and presentations

**Waimea Community Dam
April Newsletter**

Read the latest update on the dam, including some of the changes and challenges.

[READ MORE →](#)

Click here to download the April Newsletter

